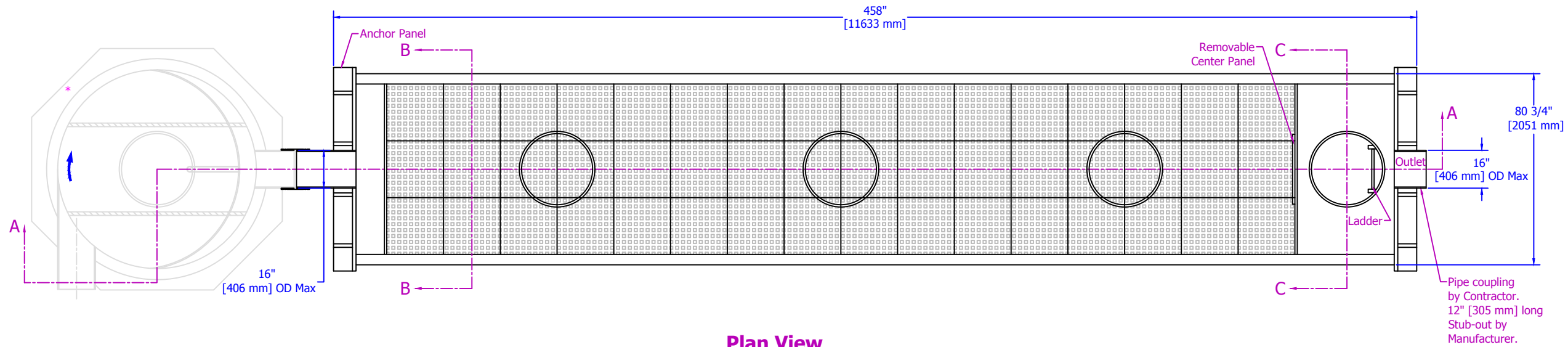
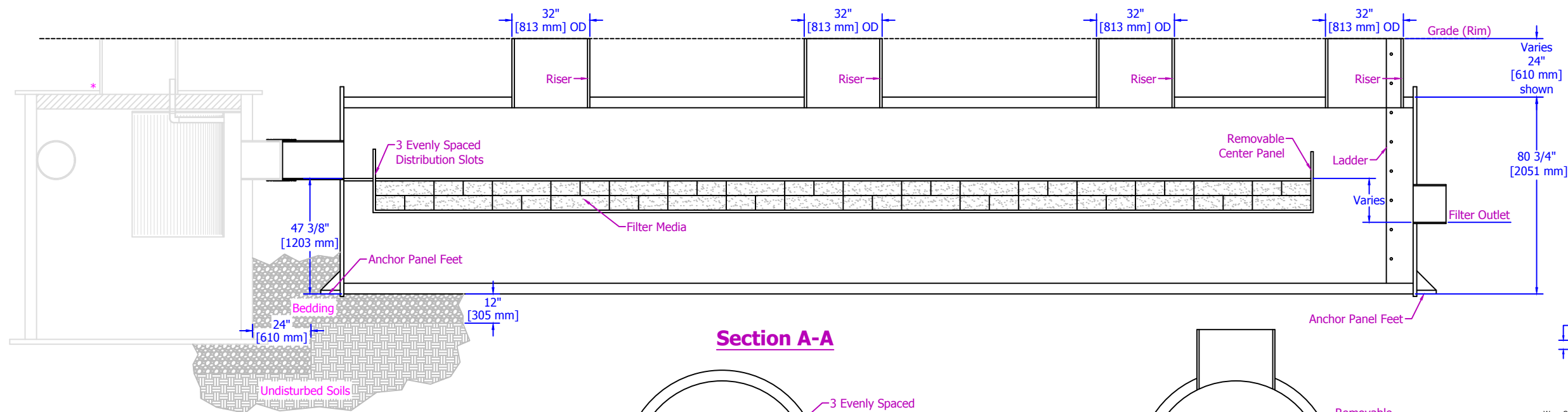


* Example Aqua-Swirl - Download AquaSwirl Detail Drawing for More Information.
 ** See Site Plan for actual system orientation.

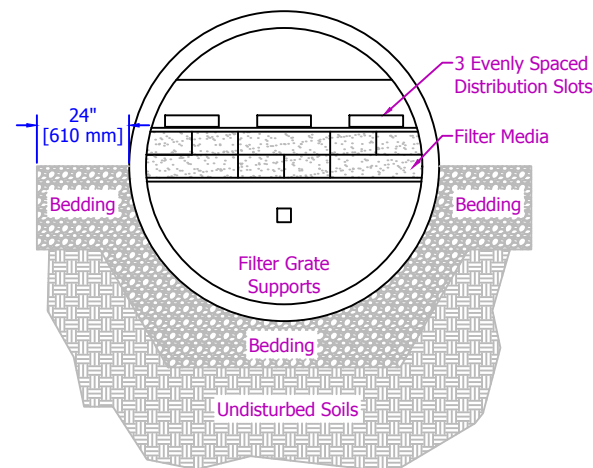


Plan View

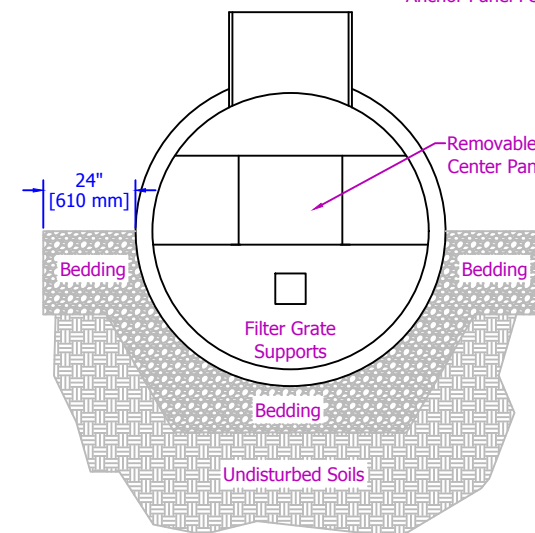
HDPE risers can be field cut to match finished grade by Contractor. Manhole Frame and Cover on All risers by Manufacturer. (See Detail)



Section A-A

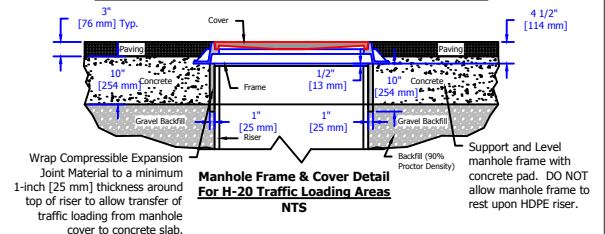


Section B-B

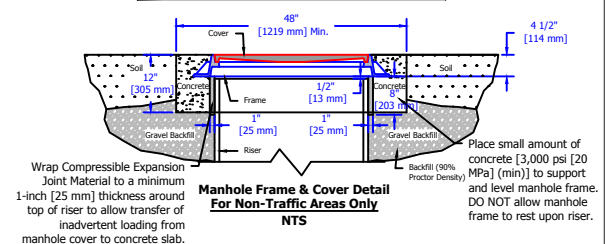


Section C-C

If traffic loading (H-20) is required or anticipated, a concrete pad must be placed over the entire Stormwater Treatment System per concrete design as calculated by Engineer. Sample details of concrete pad available upon request.



Unless other traffic barriers are present, bollards shall be placed around access riser(s) in non-traffic areas to prevent inadvertent loading by maintenance vehicles.



Gravel Backfill shall extend at least 2 feet (610 mm) outward from Swirl Concentrator and for the full height of the Swirl Concentrator (including riser) extending laterally to undisturbed soils. (See MH Detail Below)